

## Test 5

## Reading and Use of English Part 1

For questions 1–8, read the text below and decide which answer (A, B, C or D) best fits each gap. There is an example at the beginning (0).

Mark your answers on the separate answer sheet.

Example:

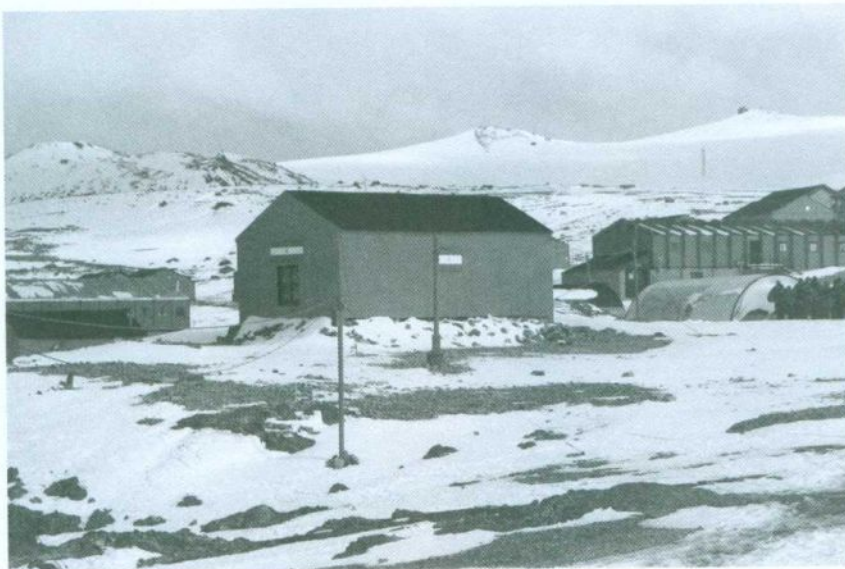
0    A beneath            B lower            C minus            D less

0	A	B	C	D
	<input type="checkbox"/>	<input type="checkbox"/>	<input checked="" type="checkbox"/>	<input type="checkbox"/>

### Mars on Earth

The centre of Antarctica, where winter temperatures frequently fall to (0) ..... 80 degrees centigrade and for four months each year there is (1) ..... darkness 24 hours a day, is one of the most extreme environments on Earth. It is also by (2) ..... the most similar place to the surface of Mars, which is why a (3) ..... of thirteen scientists from the European Space Agency have spent nine months at a base there.

They have been studying the physical and psychological (4) ..... on humans of living in extreme conditions, in order to obtain a better understanding of the difficulties humans will (5) ..... during the long flight to Mars and their stay there. Of course, space is (6) ..... Antarctica in that astronauts have to adapt to weightlessness, but the base is 3,200 metres above sea (7) ..... making it difficult to breathe there – as it can be on space flights. They have also, like space travellers, experienced strong feelings of being (8) ..... off from civilisation.



- |   |           |            |              |              |
|---|-----------|------------|--------------|--------------|
| 1 | A regular | B constant | C repeated   | D maintained |
| 2 | A far     | B much     | C large      | D long       |
| 3 | A crew    | B cast     | C gang       | D team       |
| 4 | A results | B effects  | C issues     | D risks      |
| 5 | A oppose  | B dare     | C challenge  | D face       |
| 6 | A unlike  | B contrary | C unfamiliar | D different  |
| 7 | A height  | B level    | C depth      | D scale      |
| 8 | A broken  | B cut      | C kept       | D taken      |

**Test 5****Reading and Use of English Part 2**

For questions 9–16, read the text below and think of the word which best fits each gap. Use only one word in each gap. There is an example at the beginning (0).

Example:

**0**

S I N C E

**Marathon in the mountains**

The Ultra-Trail of Mont Blanc is an extreme marathon held annually (0) ..... 2003 in the mountains of France, Italy and Switzerland. Widely regarded (9) ..... one of the toughest races in the world, the Ultra-Trail takes place in August, (10) ..... temperatures frequently range from over 30°C at the lowest points of the course, to well (11) ..... freezing at the highest.

An Olympic marathon is 42.5 kilometres long, but (12) ..... one is over 160 kilometres in length and includes nine mountain peaks. That involves climbing a total of approximately 9,500 metres, (13) ..... is considerably higher than Everest. In (14) ..... of, or perhaps because of this, the annual event has become increasingly popular with runners, to (15) ..... an extent that the numbers have had to be limited to 2300. Only about half of these, (16) ..... average, are likely to finish the course, in times that typically vary from 20 hours to over 45.

## Test 5

## Reading and Use of English Part 3

For questions 17–24, read the text below. Use the word given in capitals at the end of some of the lines to form a word that fits in the gap in the same line. There is an example at the beginning (0).

Write your answers **IN CAPITAL LETTERS** on the separate answer sheet.

Example: 0   R E A S O N A B L E

### Jobs in the future

In twenty years' time, which jobs will people still be doing, and which is it (0) ..... to assume will have gone forever? Today's young people should give that question careful (17) ..... before choosing a career. Clearly there will continue to be a need for staff in (18) ..... professions such as medicine that involve caring for others, and also for people able to persuade, like (19) ..... and lawyers.

There will of course be no (20) ..... of jobs in science and technology, particularly for individuals able to (21) ..... in newer fields such as biotechnology and microbiology.

On the other hand, the already rapid (22) ..... of jobs to robots will speed up even further, as they replace workers not only in manufacturing but also in the (23) ..... industry. And as robots learn how to stack shelves, take over at check-outs or send us our online shopping, it won't be long before most supermarket jobs have (24) ..... , too.

REASON  
CONSIDER  
EXIST

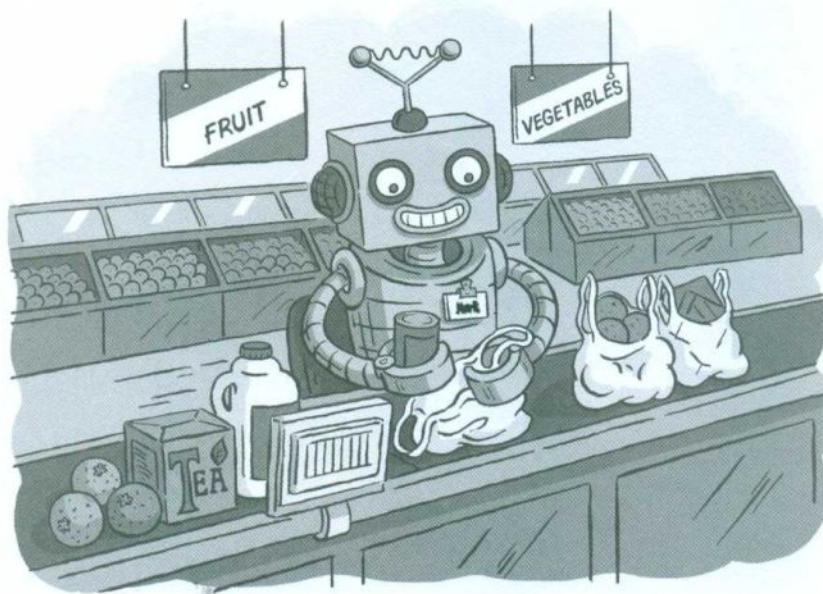
POLITICS

SHORT  
SPECIAL

LOSE

CONSTRUCT

APPEAR



## Test 5

## Reading and Use of English Part 4

For questions 25–30, complete the second sentence so that it has a similar meaning to the first sentence, using the word given. **Do not change the word given.** You must use between **two** and **five** words, including the word given. Here is an example (0).

### Example:

0 My little brother went to see the big match by himself.

#### OWN

My little brother went ..... to see the big match.

The gap can be filled by the words 'on his own' so you write:

### Example:

0

ON HIS OWN

Write only the missing words **IN CAPITAL LETTERS** on the separate answer sheet.

25 Amanda woke up late because she'd forgotten to set her alarm.

#### HAVE

If Amanda hadn't forgotten to set her alarm she ..... late.

26 This Internet browser works far better than the others.

#### NEARLY

The other Internet browsers don't ..... this one.

27 'Can I borrow your phone for a minute, Jack?' asked Emma.

#### WHETHER

Emma asked Jack ..... phone.

28 Raymond has so much skill as an artist that his drawings look like photographs.

#### SUCH

Raymond is ..... artist that his drawings look like photographs.

29 I wish I hadn't stayed up so late last night.

#### BED

I should ..... last night.

30 Our departure was delayed because another flight arrived late.

#### CAUSED

The delay to our departure ..... arrival of another flight.